

## Flowfresh Coating



### Standard Colour Chart



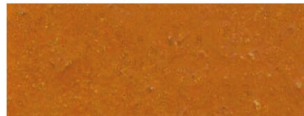
Sand Yellow



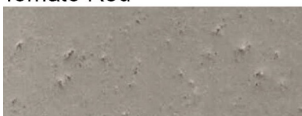
Honey Yellow



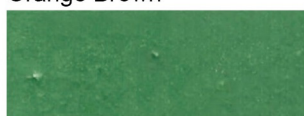
Tomato Red



Orange Brown



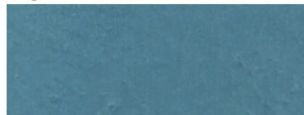
Signal Grey



Signal Green



Dusty Grey



Light Blue

### Description

Flowfresh Coating is a coloured, 4 component, water based polyurethane coating. It provides excellent chemical and good abrasion resistance.

### Uses

- Seal coat for Flowfresh WR
- Optional coat to finish or change texture of Flowfresh HF
- A chemical resistant concrete coating
- A binder for non-slip textured coatings

### Benefits

- Excellent chemical resistance (resists a wide range of organic and inorganic acids, alkali and solvents).
- Easy to mix and apply
- Non-tainting
- Moisture tolerant
- Matt finish
- High abrasion resistance
- Available in a range of colours

The applied colours may differ slightly from the examples shown above. Contact our customer services for a true colour sample or a special colour match.

### Model Specification

Product: Flowfresh Coating  
Finish: Matt  
Thickness: 0.5mm  
Manufacturer: Flowcrete SA (Pty) Ltd  
Telephone : Customer Service +27(0)31 461 3411

### Preparatory work and application in accordance with manufacturer's instructions.

#### Substrate preparation

##### Concrete

All concrete surfaces must be clean, sound, properly cured and free from oils, grease or surface contamination. The concrete must be a minimum of 25 mPa compressive strength and 1.5 mPa tensile strength. Mechanically prepare concrete to achieve open textured surface.

All dust, loose and friable materials must be removed from surfaces by vacuum before application is carried out.

Repairs to substrate such as filling and leveling should be carried out using appropriate product from Flowcrete range.

#### Mixing

Kits are packed for optimal performance and should never be split. An electric power stirrer is recommended for the successful application.

Prior to mixing Stir Base A (coloured liquid).

Pour Base A into suitable mixing vessel and slowly add Filler C (powder) whilst mixing. Continue mixing until smooth and lump free. Add Hardener B and Pigment Paste and mix for 2 minutes.

#### Application

It is not usual to apply a primer under Flowfresh Coating. Prior to application confirm substrate moisture content. Flowfresh Coating is normally applied by short pile mohair roller at a spread rate of 4- 5m<sup>2</sup>/L . As a top coat onto Flowfresh HF/WR screeds a single coat would be sufficient. Onto concrete surfaces 2 coats would be required and would be applied with a steel trowel and back rolled.

### Technical Properties

The figures that follow are typical properties achieved in laboratory tests at 20 °C and at 50% Relative Humidity.

No of components		4
Pack weight:	Base A	1.4kg
	Hardener B	1.08kg
	Filler C	2.0kg
Pigment Paste		200g
Drying time		12hrs
Shelf life		6 Months
Colour		Various
Pot Life (23°C)		± 10mins
Density		± 1.43kg/liter
Volume solids		90%
Application Temperature		5 to 30°C

#### Curing

Allow 15 hours between coats

Allow 48 hours before light foot traffic.

Full cure 3 Days.

All figures quoted are for application above 20°C

#### Health & Safety

Use appropriate personal protective equipment such as gloves and goggles.

#### Note

Flowcrete's products are guaranteed against defective materials and manufacture, and are sold subject to its standard terms and conditions of sale. Copies of which can be obtained on request.