

## Flowfresh HF ESD



### Description

Flowcrete HF is a 6 – 9 mm heavy duty, chemical resistant, antimicrobial treated polyurethane resin floor screed with electrostatic dissipative properties.

### Uses

Ideal for chemical processing plants, secondary chemical containment zones and solvent decanting plants requiring electrostatic dissipative properties.

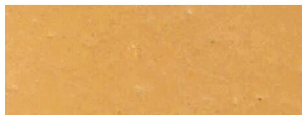
### Benefits

- Contains Polygiene, an antimicrobial additive based on silver ion technology.
- Very high chemical resistance with anti static.
- Easy to clean and sterilise - minimal joints.
- ESD in the range  $5 \times 10^6 - 5 \times 10^8$  ohms.
- Steam cleanable.
- Non tainting, non dusting.
- High abrasion resistance.
- Withstands high mechanical stress.
- Good alternative to expensive acid resistant tiles.
- Low odour during application.
- Positive slip resistance.

### Project References

SASOL acrylates plant, Rainbow Chickens.  
Food: Nestlé, McVities, ABI, Cadbury's, also Meat, Fish and Drinks Industry  
Pharmaceutical: Astra Zeneca, Pfizer, Bayer, GlaxoSmithKline, Unilever

### Standard colour chart



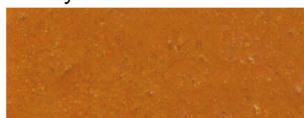
Sand Yellow



Honey Yellow



Tomato Red



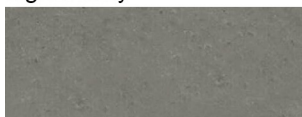
Orange Brown



Signal Grey



Signal Green



Dusty Grey



Light Blue

The applied colours will differ slightly from the examples shown above, due to printing variations. Contact our customer services for a true colour sample or a special colour match.

## Model Specification

Product: Flowfresh HF ESD  
Finish: Matt  
Thickness: 6 mm  
Colour: As per colour chart

Manufacturer: **Flowcrete SA (Pty) Ltd**  
Telephone: **Customer Service - +27 31 461 3411**

## Preparatory work and application in accordance with supplier's instructions.

### Substrate Requirements

Concrete or screed substrate should be a minimum of 25/mm<sup>2</sup>, up to and including the top surface layer, free from laitance, dust and other contamination. The substrate should be dry to 75% RH as per BS 8202 and free from rising damp and ground water pressure.

### Installation Service

The installation should be carried out by a Flowcrete approved contractor with a documented quality assurance scheme. Obtain details of our approved contractors by contacting our customer service team or enquiring via our web site [www.flowcretesa.co.za](http://www.flowcretesa.co.za)

### Environmental considerations

The finished system is assessed as non-hazardous to health and the environment. The long service life and seamless surface reduce the need for repairs, maintenance and cleaning. Environmental and health considerations are controlled during manufacture and application of the products by Flowcrete staff and fully trained and experienced contractors.

### Focus on the Floor-zone

Flowcrete Group are world leaders in specialist industrial and commercial flooring. Systems available include: underfloor heating systems, floor screeds, surface damp proof membranes, decorative floor finishes, seamless terrazzo, car park deck waterproofing, tank lining systems... to name just a few. Our objective is to satisfy your Floorzone needs.

### Important Note

Flowcrete's products are guaranteed against defective materials and manufacture and are sold subject to its standard Terms and Conditions of Sale, copies of which can be obtained on request.

## Technical Information

The figures that follow are typical properties achieved in laboratory tests at 20°C and at 50% Relative Humidity.

Fire Resistance:	BS 476: Part 7 Surface Spread of flame: Class 2
Slip Resistance:	Method described in BS 7976-2 (typical values for 4-s rubber slider) Dry 100 Wet 40 minimum
Thermal Resistance:	Tolerant up to 120 °C intermitted spillages or constant 105 °C dry heat at 9 mm thickness
Water Permeability:	Nil- Karsten test (impermeable)
Chemical Resistance:	Go to <a href="http://www.flowcrete.com">www.flowcrete.com</a> Excellent resistance to sugars and most acid (organic and inorganic)
Abrasion Resistance:	ASTM D4060 Taber Abrader : 25 mg loss per 1000 cycles ( 1kg load using H22 wheels) BS 8204-2: Class AR2
Compressive Strength:	>60 N/mm <sup>2</sup> (BS 6319)
Flexural Strength:	>20N/mm <sup>2</sup>
Tensile Strength:	>10N/mm <sup>2</sup>
Bond Strength:	Greater than cohesive strength of 25N/mm <sup>2</sup> concrete > 1.5mpa

## Speed of Cure

	10°C	20°C	30°C
Light traffic	36hrs	18 hrs	12hrs
Full traffic	72hrs	36 hrs	16 hrs
Full chemical cure	10 days	7 days	5 days

## Aftercare - Cleaning and Maintenance

Clean regularly using a single or double headed rotary scrubber drier in conjunction with a mildly alkaline detergent.

## Further Information

To ensure you are specifying a fit for purpose flooring for your project please consult our Technical Advisors on the number below or visit our website to register your interest in specifying one of the most durable floors on the market.