

Flowfresh SL (2 mm)



Description

Flowfresh SL is a pigmented, self-smoothing, chemical resistant, antimicrobial, polyurethane resin floor finish. **Flowfresh SL** incorporates Polygiene® - a performance based antimicrobial which inhibits the growth of bacteria, fungi, moulds and mildew.

Uses

Ideal for dry or semi-wet processing zones such as food or pharmaceutical packaging.

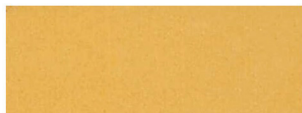
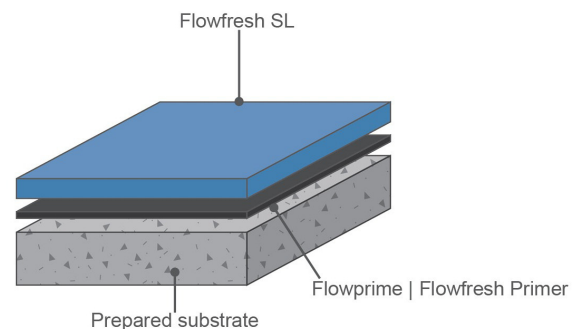
Benefits

- Proven antimicrobial performance
- High chemical resistance
- Easy to clean and sterilise
- Non-tainting, non-dusting
- High abrasion resistance
- Low odour during application
- Fast return to service

Project References

B. Foods, Saha Farms, CP, Sun Valley, Nestlé, Nippon Foods, Kuala Lumpur Convention Centre, Thai International Airway, Panus Poultry

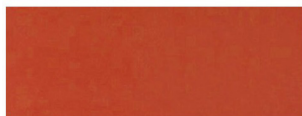
System Design



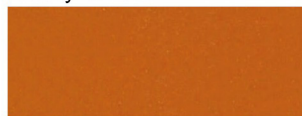
Sand Yellow



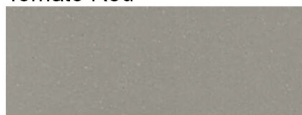
Honey Yellow



Tomato Red



Orange Brown



Signal Grey



Signal Green



Dusty Grey



Light Blue

The applied colours may differ slightly from the examples shown above. Contact our customer services for a true colour sample or a special colour match.

Model Specification

Product: Flowfresh SL
Finish: Matt
Thickness: 2mm
Manufacturer: Flowcrete SA (Pty) Ltd
Telephone: Customer Service - +27 31 461 3411

Preparatory work and application in accordance with manufacturer's instructions.

Substrate Requirements

Concrete or screed substrate should be a minimum of 25N/mm², free from laitance, dust and other contamination. The substrate should be surface and free from rising damp and ground water pressure.

Available in Multi-Pack Supply Format

- Flowfresh HF/MF/RT (A+B)
- Flowfresh SL Filler C
- Flowfresh SL Pigment Paste

Products Included in this System

Flowfresh Primer
Flowfresh SL

Detailed application instructions are available upon request.

Installation Service

The installation should be carried out by a Flowcrete approved applicator with a documented quality assurance scheme. Obtain details of our approved contractors by contacting our customer service team or enquiring via our web site at www.flowcretesa.co.za

Environmental Considerations

The finished system is assessed as non-hazardous to health and the environment. The long service life and seamless surface reduce the need for repairs, maintenance and cleaning. Environmental and health considerations are controlled during manufacture and application of the products by Flowcrete staff and fully trained and experienced contractors.

Aftercare - Cleaning and Maintenance

Clean regularly using a single or double headed rotary scrubber drier in conjunction with a mildly alkaline detergent.

Important Note

Flowcrete's products are guaranteed against defective materials and manufacture and are sold subject to its standard Terms and Conditions of Sale, copies of which can be obtained on request.

Microbial / Fungal Resistance

The Polygiene® antimicrobial additive incorporated into Flowfresh SL provides control of most bacteria and fungi which come into contact with the floor.

Colour Stability

Flowfresh SL is not colour fast and may change colour over time (exhibits a yellowing effect). Colour change depends on the UV light and heat levels present and hence the rate of change cannot be predicted. This is more noticeable in light colours and blues but does not compromise the product's chemical resistance or physical characteristics. Consult our Technical Department for UV light stable specification.

Technical Information

The figures that follow are typical properties achieved in laboratory tests at 20 °C and at 50% Relative Humidity.

Fire Resistance	BS476:Part 7 Surface Spread of Flame: Class 2 (indicative)
Slip Resistance	TRRL Pendulum Slip Test Dry > 70 , Wet > 25
Impact Resistance	BS8204 Part1 Cat: A (<0.5mm) ISO6272 1kg weight >1.8m 2kg weight >1.5m
Temperature Resistance	From 5°C to 65°C
Coefficient of Thermal Expansion	ASTM C531: 5.70 x 10 ⁻⁵ °C ⁻¹
Water Permeability	Nil-Karsten test (impermeable)
Chemical Resistance	Contact Technical Department. Excellent resistance to sugars and most acids
Abrasion Resistance	Taber Abrader: 0.1g loss per 1000 cycles (1kg load using CS17 wheels)
Compressive Strength	>50 N/mm ² (BS6319)
Flexural Strength	>20 N/mm ² (BS6319)
Tensile Strength	>12 N/mm ² (BS6319)
Bond Strength	Greater than cohesive strength of 25 N/mm ² concrete. >1.5 MPa.
Anti-Microbial	Japanese Industrial Standard JIS Z 280: 2000

Speed of Cure

	10°C	20°C	30°C
Light traffic	36 hrs	24 hrs	12 hrs
Full traffic	72 hrs	48 hrs	24 hrs
Full chemical cure	10 days	7 days	6 days

Customer Service

For more information regarding this product please contact the manufacturer.

Further Information

To ensure you are specifying a fit for purpose floor system for your project please consult our Technical Advisors on the number below or visit our website to register your interest in specifying one of the most durable floors on the market.