

Flowfresh WR



Description

Flowfresh WR is a 5 mm heavy duty, chemical resistant antimicrobial treated polyurethane coving and wall rendering mortar. Attractive fine textured finish with a speckled effect on the surface.

Uses

Ideal for wet processing zones such as food manufacturing, chemical processing plants and food preparation areas.

Benefits

- Contains Polygiene, an antimicrobial additive based on silver ion technology.
- Very high chemical resistance.
- Easy to clean and sterilise anti-slip surface, minimal joints.
- Heat resistant to 100°C.
- Steam cleanable.
- Non tainting, non dusting.
- High abrasion resistance.
- Withstands high mechanical stress.
- Good alternative to expensive acid resistant tiles.
- Low odour during application.
- Positive slip resistance.

Project References

Food: Nestlé, ABI Coke, SAB Miller, also Meat, Fish and Drinks Industry.

Pharmaceutical: Astra Zeneca, Pfizer, Bayer, GlaxoSmithKline, Levers and many more.

Standard Colour Chart



Sand Yellow



Honey Yellow



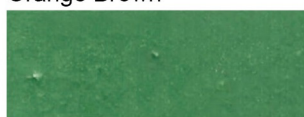
Tomato Red



Orange Brown



Signal Grey



Signal Green



Dusty Grey



Light Blue

Model Specification

Product: Flowfresh WR
Finish: Matt
Thickness: 5 mm
Colour: As per colour chart
Manufacturer: Flowcrete SA (Pty) Ltd
Telephone : Customer Service +27(0)31 461 3411

Preparatory work and application in accordance with supplier's instructions.

Substrate Requirements

Concrete or screed substrate should be a minimum of 25/mm², up to and including the top surface layer, free from laitance, dust and other contamination. The substrate should be dry to 75% RH as per BS 8202 and free from rising damp and ground water pressure.

Products Included in this System

Primer: Flowprime
OR Flowfresh Primer

OR where high heat resistance is critical,
Flowfresh Coating

Topping: Flowfresh Coating

Flowfresh WR is a self-sealing finish.

Detailed application instructions are available upon request.

Installation Service

The installation should be carried out by a Flowcrete approved contractor with a documented quality assurance scheme. Obtain details of our approved contractors by contacting our customer service team or enquiring via our web site www.flowcretesa.co.za.

Focus on the Floor-zone

Flowcrete Group are world leaders in specialist industrial and commercial flooring. Systems available include: underfloor heating systems, floor screeds, surface damp proof membranes, decorative floor finishes, seamless terrazzo, car park deck waterproofing, tank lining systems... to name just a few. Our objective is to satisfy your Floorzone needs.

Flooring Design Service

Special corporate colours and designs can be produced to special order.

Microbial/Fungal Resistance

The Polygiene antimicrobial additive incorporated into Flowfresh WR provides control of most bacteria and fungi which come into contact with the floor.

Aftercare - Cleaning and Maintenance

Clean regularly using a single or double headed rotary scrubber drier in conjunction with a mildly alkaline detergent.

Technical Information

The figures that follow are typical properties achieved in laboratory tests at 20°C and at 50% Relative Humidity.

Fire Resistance:	BS 476: Part 7 Surface Spread of flame: Class 2
Slip Resistance: (Pendulum Slip Test Method described in BS7976-2)	Dry > 80 Wet > 40 (dependent upon texture achieved during laying)
Impact Resistance:	BS8204-1Cat A (<0.5mm) ISO6272 1kg weight >1.8m 2kg weight >1.5m
Thermal Resistance:	Tolerant up to 100 °C intermittent spillages or constant 90 °C dry heat at 5 mm thickness
Water Permeability: Vapour Permeability:	Nil- Karsten test (impermeable) ASTM E96:90 3g/m ² /24hrs (at 5mm thick)
Chemical Resistance:	Go to www.flowcrete.com Excellent resistance to sugars and most acids (organic and inorganic)
Abrasion Resistance:	ASTM D4060 Taber Abrader: 25 mg loss per 1000 cycles (1kg load using H22 wheels) BS 8204-2: Class AR2
Compressive Strength:	>50 N/mm ² (BS 6319)
Flexural Strength:	20N/mm ² (BS 6319)
Tensile Strength:	10N/mm ² (BS 6319)
Bond Strength:	Greater than cohesive strength of 25N/mm ² concrete > 1.5MPa

Speed of Cure

	10°C	20°C	30°C
Light traffic	36hrs	16 hrs	12hrs
Full traffic	72hrs	24 hrs	16 hrs
Full chemical cure	10 days	7 days	5 days

Life Expectancy

7-10 Years: dependant on thickness and subject to correct maintenance regime. Flowfresh WR is not colour fast and may change colour over time (exhibits a yellowing effect). Colour change depends on the UV light and heat levels present and hence the rate of change cannot be predicted. This is more noticeable in light colours and blues but does not compromise the products physical properties or chemical resistance characteristics. We have endeavoured to adopt colours within our standard range which minimise this change.

Important Note

Flowcrete's products are guaranteed against defective materials and manufacture and are sold subject to its standard Terms and Conditions of Sale, copies of which can be obtained on request.