



600 DUAL

*Electric Water Heaters for both
Horizontal and Vertical Installations
Slimline and Standard*





600 DUAL

50 litre; 100 litre; 150 litre slimline
100litre; 150 litre; 200 litre and 250 litre standard



Slimline



Standard

PRODUCT SPECIFICATIONS

- **Kwikot 600 Dual** is a high pressure universal electric storage water heater and is **SABS 600kPa** approved.
- The product is a dual design as it can be installed horizontally and vertically. Adjustable brackets for left or right hand wall mountings are available on request.
- Integral electrical connections between the element and thermostat, eliminating incorrect installation and burnt wiring.
- Thermofused porcelain enamel inner cylinder for hygiene and endurance.
- Available in Slimline and Standard.

PRODUCT STANDARDS

Kwikot 600 Dual electric water heaters comply with **SABS 151-2002 (600kPa)** and are manufactured in an **ISO-9001** quality controlled environment and are Jaswic approved.

Capacity (litres)	Element Rating	Operating (kPa)	Mass (kg)	Plumbing Connections (mm, male iron)
SLIMLINE				
50	2kW	0-600	21	20
100	2kW	0-600	30	20
150	3kW	0-600	39	20
STANDARD				
100	2kW	0-600	31	20
150	3kW	0-600	36	20
200	4kW	0-600	47	20
250	4kW	0-600	64	20

PRODUCT GUARANTEES

Product guarantees are determined by the correct specification and servicing requirements:

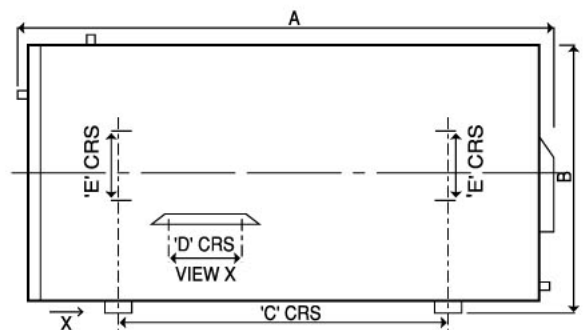
- One year on the thermostat, spiral element, flange assembly plate and gasket.
- Two years on the **KWIKOT** safety valve and **KWIKOT** drain cock.
- The inner cylinder of the **Kwikot 600i Dual** is guaranteed for five years from date of manufacture, subject to water conditions equivalent to main Metropolitan supply authorities.
- All installation guarantees are the responsibility of the installer.

The following water specification and anode servicing requirements are detailed below:

TOTAL DISSOLVED SOLIDS (PARTS PER MILLION)	RECOMMENDED ANODE REPLACEMENT
100 - 600	3 years
601 - 1 000	2 years
over 1 000	1 year

PRODUCT CODES, CAPACITY AND DIMENSIONS

Code	Capacity (litres)	A	B	C	D	E
SLIMLINE						
ESG-050	50	610	480	180	355	225
ESG-100	100	990	480	570	355	225
ESG-150	150	1360	480	945	355	225
STANDARD						
EF100-2D	100	760	535	420	365	225
EF150-2D	150	1040	535	700	365	225
EF200-2D	200	1380	535	995	365	225
EF250-RD	250	1650	535	1280	365	225



INSTALLATION SPECIFICATIONS

Component Installation Procedure

- **KWIKOT PROCLEAN** sediment filter incorporating a backwashing facility, a pressure control valve, expansion relief valve and isolator; or a **MULTI 600 kPa** pressure control valve with integral isolator and expansion relief; or a **MONO 600kPa** pressure control valve.
- **KWIKOT** vacuum breakers.
- A **KWIKTRAY** polyethylene geyser tray complying with SABS 1848, must be installed.
- The guarantee/instruction booklet is supplied with the **Kwikot 600 Dual** water heater and is located under the electrical cover plate.
- The **Kwikot 600 Dual** must be installed in compliance with **SABS 0254**. (See back of brochure).

Minimum Installation Clearances

- 50 litre, 100 litre and 150 litre - 450mm on either side of the geyser.
- 200 litre and 250 litre - 920mm on either side of the geyser.
- **Kwikot 600 Dual 200 litre and 250 litre water heaters should not be attached to a wall.**



KWIKOT **Multi** VALVE



KWIKOT **Mono** VALVE



KWIKOT VACUUM BREAKERS



KwikTRAY GEYSER TRAY



KWIKOT SAFETY VALVE



KWIKOT **PRO CLEAN**



KWIKOT DRAINCOCK



KWIKOT SPIRAL ELEMENT



KWIKOT 20 AMP THERMOSTAT

CAPACITY SELECTION GUIDE FOR AN ELECTRIC WATER HEATER

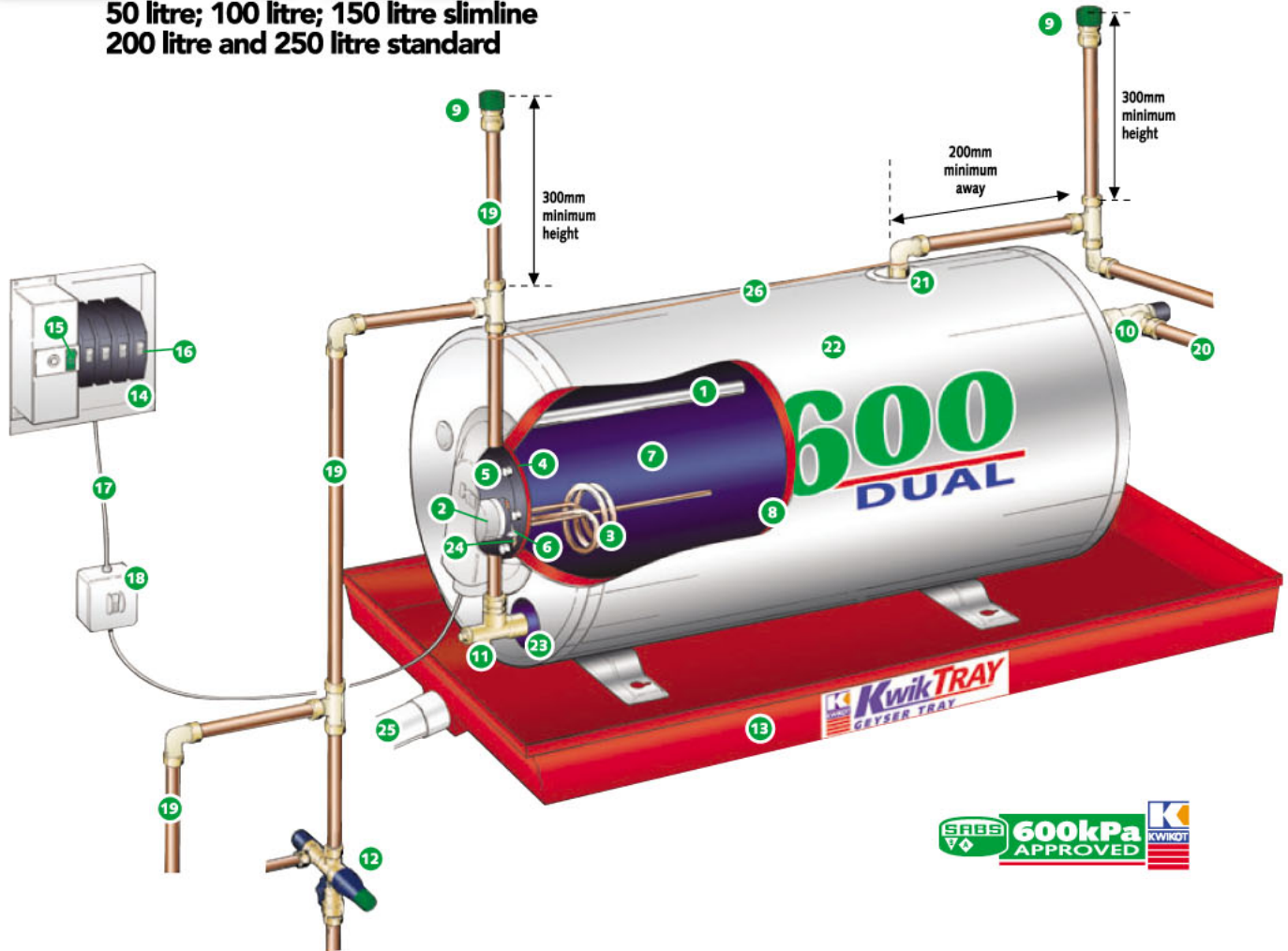
TYPE OF HOUSING Based upon economic status	Property Cost	Select The Primary Two Criteria				600 Dual (1 or 2 units)				
		Number of Bathrooms	Number of Bedrooms	Servants Quarters	Family Size	50lt	100lt	150lt	200lt	250lt
Upper Class Housing	R 1 000 000	1	3	0 or 1	4			1		
		1 or 2	3 or 4	1	5			1	1	
		2	3 or 4	1	+6				1	1
Upper -Upper Class Housing	+ R 3 000 000	2	3 or 4	1	4			1		
		2	3 or 4	1	5			2	1	1
		2 or 3	+4	1	+6				2	2
Executive Housing & Mansions	+ R 5 000 000	2	3 or 4	1	4 or 5				1	1
		3	3 or 4	1	+6			2	2	2
		+3	+4	1 or 2	+6				2	2
Townhouses	R 300 000	1	1	0	1 to 2	1	1			
	R 500 000	2	2 or 3	0	3 to 4			1		
	+ R 1 000 000	3	3 or 4	0	+5				1	1
Cluster Homes	R 350 000	1	2	0	1 to 3		1	1		
	R 750 000	2	2 or 3	0 or 1	4 to 5			1	1	
	R 1 500 000	2 or 3	3 or 4	0 or 1	+5				1	1
	+ R 2 500 000	3	+4	0 or 1	+6				2	2

FIGURES IN GREEN DEPICT AN OPTIONAL CAPACITY GEYSER. THE ABOVE TABLE IS A GUIDE ONLY.



600 DUAL

50 litre; 100 litre; 150 litre slimline
200 litre and 250 litre standard



DESCRIPTION	
1	Anode
2	Kwikot Thermostat TH208, 20Amp
3	Kwikot Spiral Element
4	Flange Gasket
5	Flange
6	Earth Stud
7	Thermofused Porcelain Enamel Lining
8	Urethane Insulation
9	Kwikot Vacuum Breaker
10	Kwikot Safety Valve, 600kPa
11	Kwikot Draincock
12	Kwikot Multi Valve, 600kPa
13	Kwiktray Geyser Tray
14	Distribution Board
15	Earth Leakage - 60 Amp
16	Geyser Circuit Breaker
17	Cable Size, Minimum of 2,5mm ²
18	Isolating Switch 1m away from Electrical Connection on Geyser
19	Copper Pipe
20	Overflow Pipe to Exterior of Building, 20mm Metallic
21	Hot Water Outlet
22	Kwikot 600 Dual Geyser, 600kPa SABS Approved
23	Cold Water Inlet
24	Casement/Flange Earth Strap
25	Geyser Tray Overflow Pipe, 40mm
26	Earth Bonding Strap between Hot and Cold Water

KWIKOT (PTY) LTD
INLAND DIVISION
PO BOX 1016
BENONI, 1500.
TEL: (011) 914 2300
FAX: (011) 914 4750
e-mail: hotwater@kwikotinl.co.za
www.kwikot.co.za

KWIKOT (PTY) LTD
EASTERN CAPE DIVISION
PO BOX 3082
NORTH END, PORT ELIZABETH, 6056
TEL: (041) 373 0575
FAX: (041) 373 0577
e-mail: hotwater@kwikotec.co.za

KWIKOT (PTY) LTD
WESTERN CAPE DIVISION
PO BOX 443
EPPINDUST, 7475
TEL: (021) 534 3691
FAX: (021) 534 1606
e-mail: hotwater@kwikotwc.co.za

KWIKOT (PTY) LTD
KWAZULU-NATAL DIVISION
PO BOX 47366
GREYVILLE, 4023
TEL: (031) 579 2178
FAX: (031) 579 2199
e-mail: hotwater@kwikotkzn.co.za



Committed to Our Warranty Obligations!